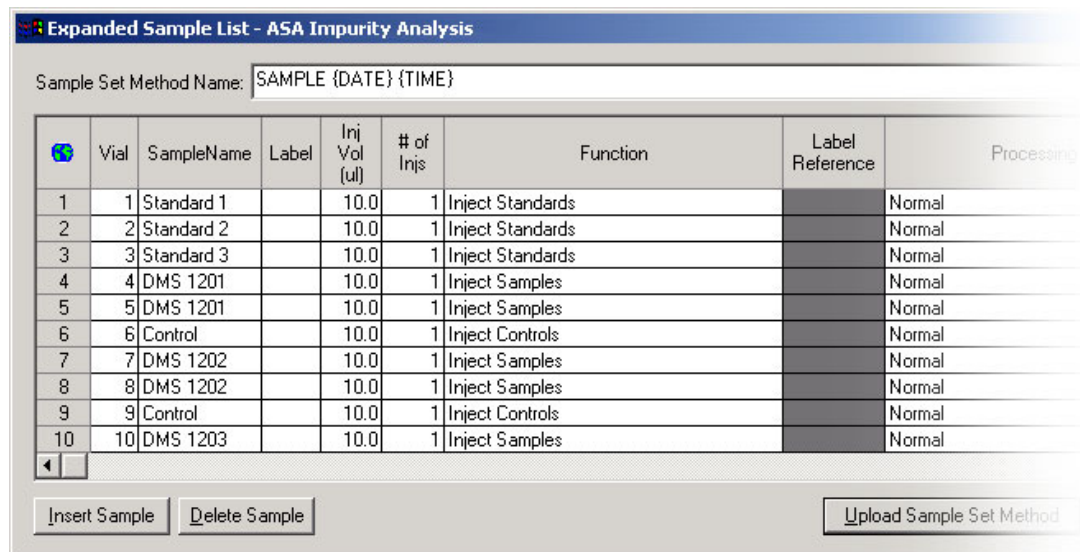
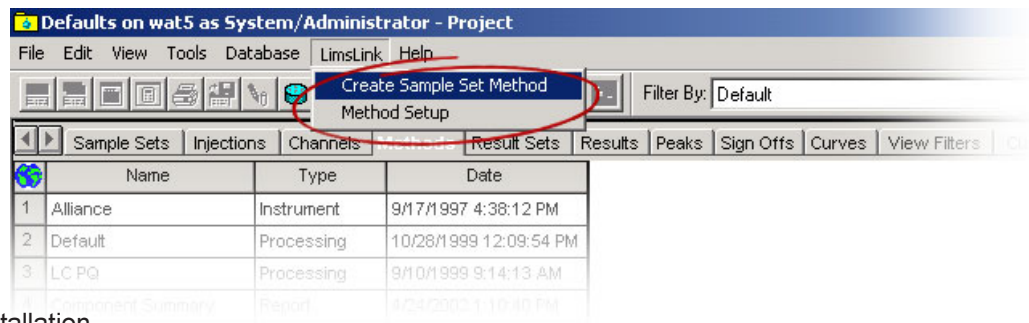


## Full Integration for Millennium<sup>32</sup> and Empower

### Embedded LIMS Interface

LimsLinkCDS adds new menu items to Millennium<sup>32</sup> and Empower, which provide direct access to the LIMS. The menus are controlled by the CDS security system, eliminating the need to logon separately to use the interface. The user can select the location of the menus during installation.

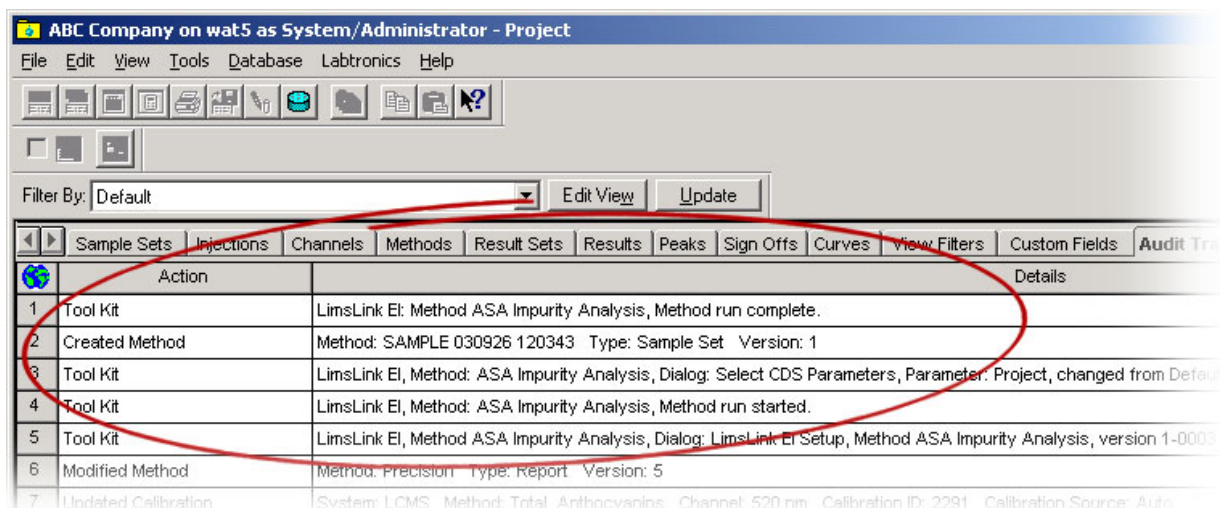


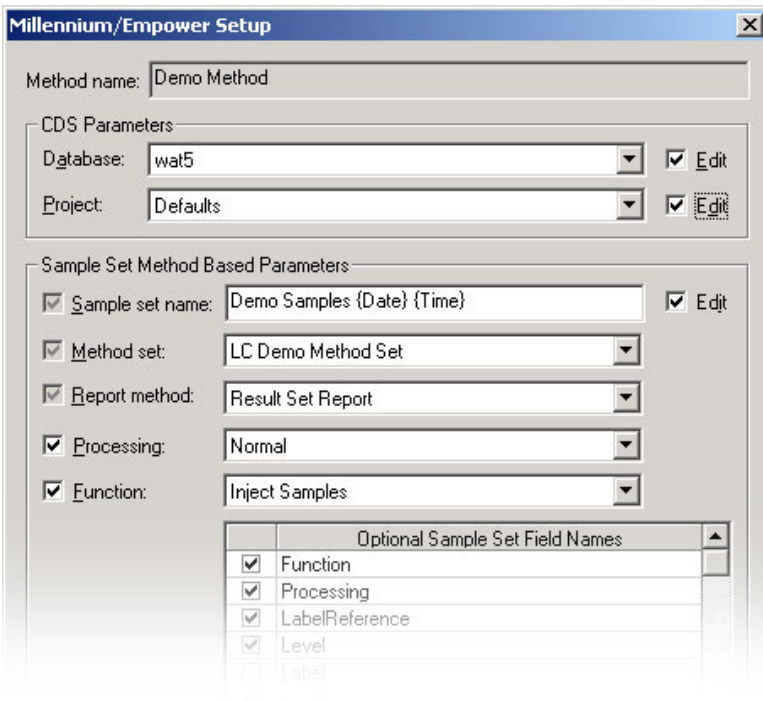
### View and Extract LIMS Worklists

Available LIMS worklists can be selected directly from the CDS. The analyst can view and edit the list to ensure it is complete and accurate. Special samples like standards and check samples are automatically inserted and replicates are expanded. The sample list is then converted to a Sample Set Method and transferred to the CDS.

### Integrated with Millennium<sup>32</sup> and Empower Audit Trail

LimsLinkCDS uses the Millennium<sup>32</sup> and Empower Audit Trail system. This will track activity such as connecting to LIMS, selecting worklists, changes to samples, creating Sample Set Methods and reporting of results after analysis.





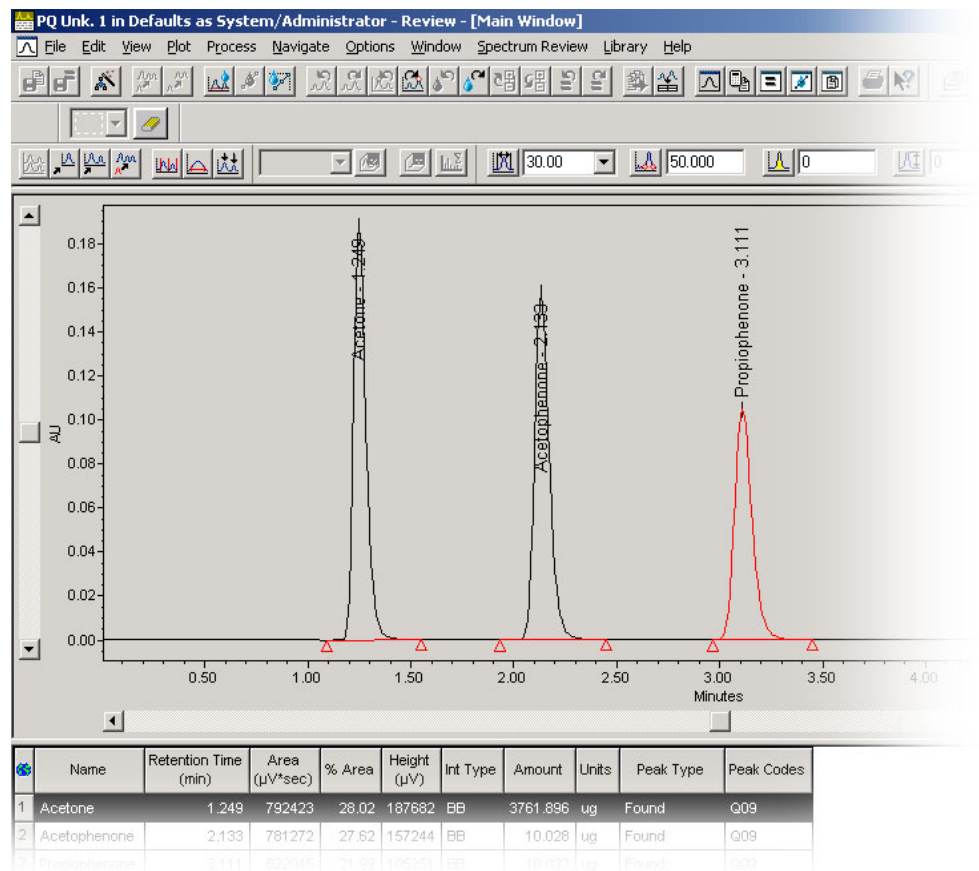
## Setup – Simple Configuration

Configuration is quick and easy using drop-down menus and checkboxes that use Millennium<sup>32</sup> and Empower terminology. LimsLink<sup>CDS</sup> uses methods to store configurations allowing each analyst or group of analysts to use different pre-configured methods.

## View Chromatograms from LIMS

An analyst working in LIMS, who wants to view the chromatogram for a specific sample, can do so right from the LIMS. Menu options added by LimsLink<sup>CDS</sup> will open the Review Client from Millennium<sup>32</sup> or Empower and display the selected chromatogram.

Millennium<sup>32</sup> and Empower Copyright by Waters Corporation



**LABTRONICS INC.**

**Waters**

North America • Labtronics Inc. • Tel: (519) 767-1061 • Fax: (519) 836-4431 • E-mail: info@labtronics.com  
 Europe • Labtronics B.V. • Tel: + 31 (0) 182 551243 • Fax: + 31 (0) 182 551270 • E-mail: EuroInfo@labtronics.com  
 www.labtronics.com